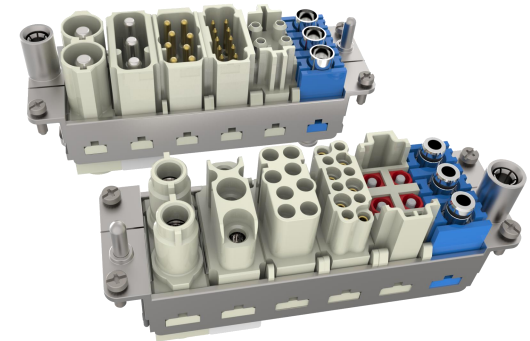


STOCK CODE: 300351

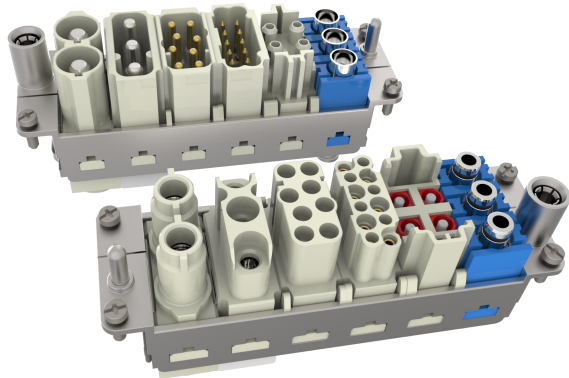
CONNECTION TO FUTURE



# Yonggui HDC Connectors



# CONTENTS



1

**Our Profile**

2

**Applications**

3

**Product Benchmark**

4

**Global Projects**

1

## Our Profile

---

# Our Company

Yonggui Company (“YGC”) is a **high-tech enterprise** with 51 years expertise focused on the research and development, manufacturing, sales and technical support of connectors, connector systems and smart precision products. It was listed on **Shenzhen Stock Exchange** in September 2012. The products are distributed in the three major fields of **new energy and vehicle (51%), railway and industrial (44%), special market (5%)**.

Yonggui has **668 national patents**, and has obtained ISO 9001, ISO/TS 22163, CRCC, ETL, UL and IATF16949 certifications.



## Market Value

¥7,343M (\$1.02B)



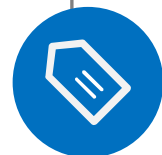
## 2023 total sales

¥ 1,933M (\$268M)



## Consolidated sales

¥ 1,518M (\$211M)



## Employee

~2362 (32% engineers)

\*market value at 2024/12/6; USD/CNY = 7.2

# 50+ Years History of Entrepreneurship

## World-Class Interconnect Supplier

**1973**  
Foundation

**1979**  
Build 1st  
connector

**2008**  
Sichuan  
Yonggui Set up

**2009**  
High speed  
train entry

**2012**  
IPO; Enter new  
energy market



**2014**  
Special  
market entry

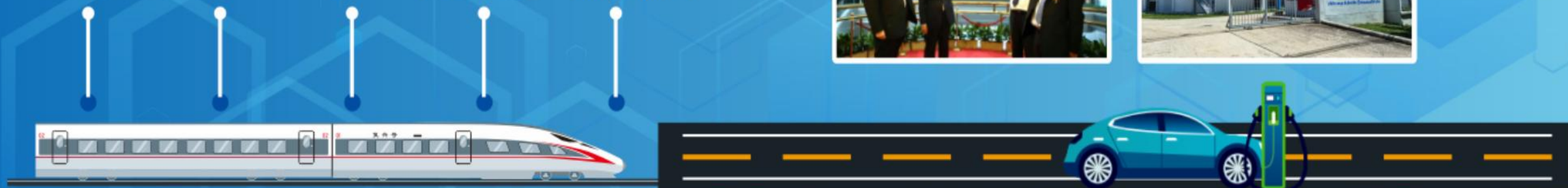
**2017**  
JV with  
Toyo (Japan)  


**2018**  
Yonggui Group  
establishment

**2019+**  
Business  
transforming  
to new energy  
focus

**2023**  
Globalization

**2024**  
Singapore  
office &  
Thailand  
plant set up



# Leading Multiple Railway Markets

## New Energy

- 1# player for HPC provider in China & globally; leading charging connector supplier globally
- Leading high voltage connector supplier in China
- Leading for ESS connector in China

## Railway & other Industrial

- **1# player for railway connector in China**
- **1# player for wind power HDC connector in China**
- No. 2 Axle counter supplier in China
- Leading Gangway supplier in China
- Leading Pantograph supplier in China
- Leading railway BMS supplier in China



2

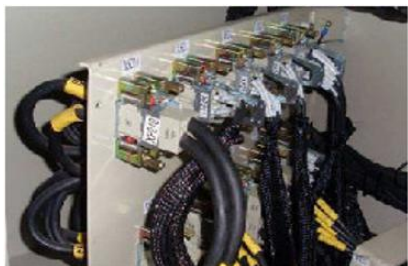
# Applications

---

# Key Application of Rail Traffic Connectors



司机台 Driver's Console



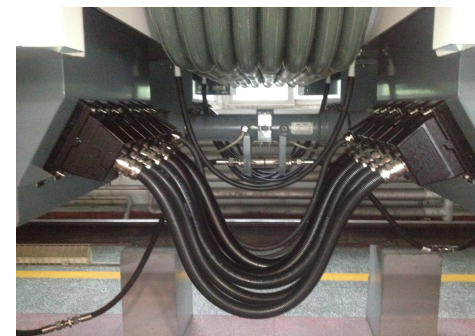
空调系统  
Air-conditioning System



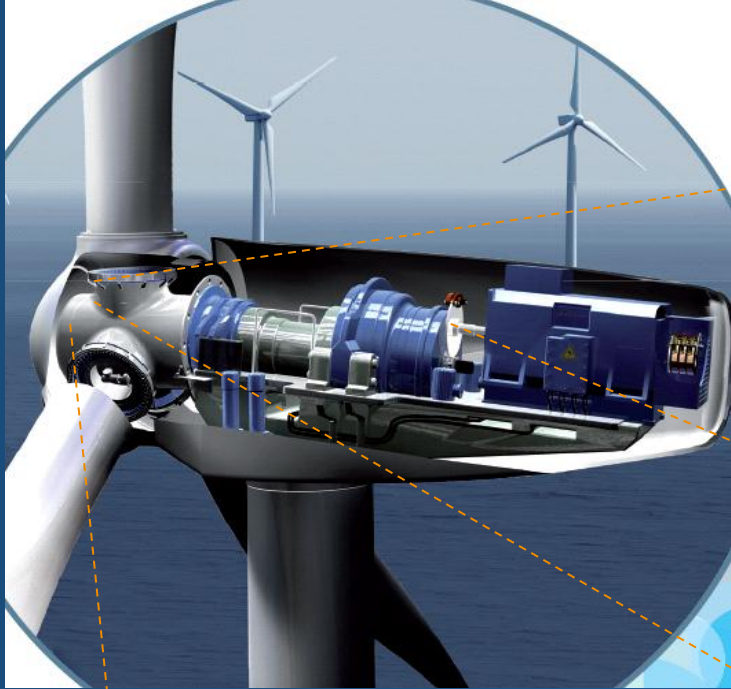
牵引系统 Traction System



车端系统 Vehicle End System



# Key Products – Wind Power Connector Systems



Pitch system



Heavy Duty Connector & cables for control box



Wind power slip ring and connector



Encoder and motor connector



# Products – Construction Equipment Connectors

Power & High Density Signal Connector



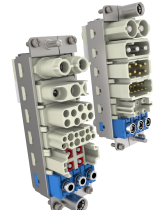
Sensor Connectors



Generator Connector



Power Connector To Electric Cabinet



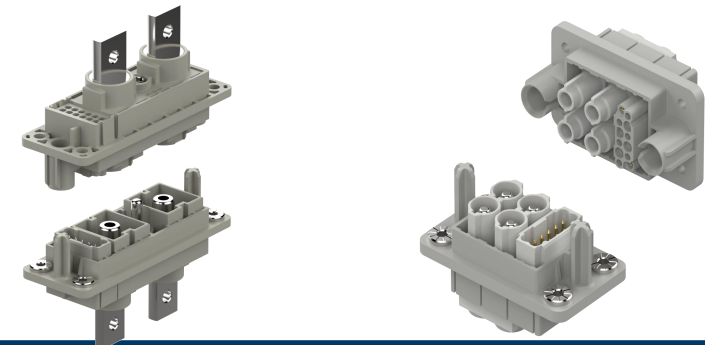
# Products – Energy Storage Connectors



## Socket Box /Wall Receptacle



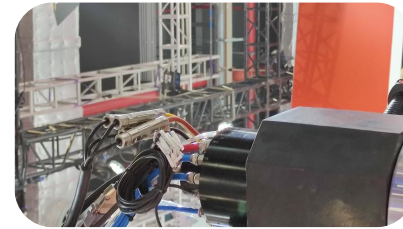
## Stacked



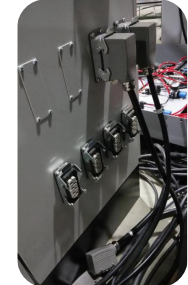
# Key Products – Industry 4.0 Connectors



Motor Encoder And Circular Power Connector



Base Cabinet Heavy Duty Connectors



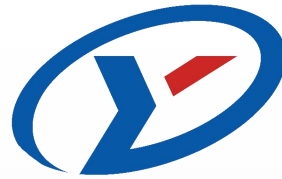
3

## Product Benchmark

---



# Harting vs Yonggui

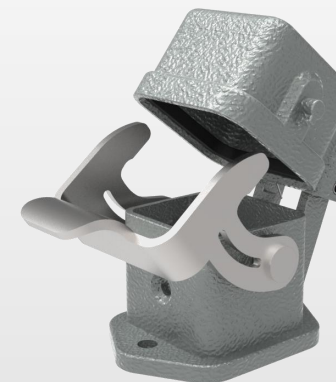
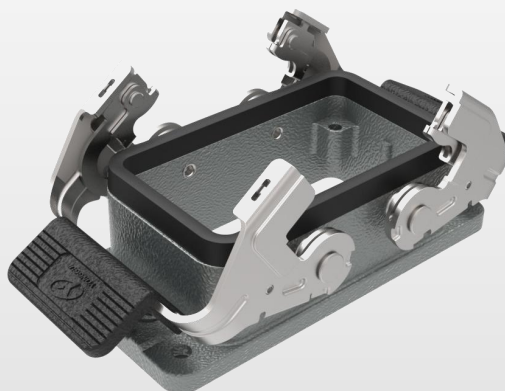
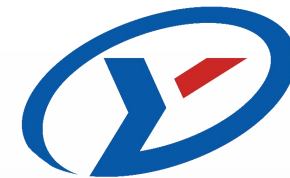


		Total # of variants			
Hoods/housing ranges	Harting sizes	Yonggui sizes	Harting	Yonggui	Yonggui coverage
A (Slim)	3A,6A,10A,16A,32A	3A,6A,10A,16A,24A,32A,48A	27	15	56%
B (Modular)	6B,10B,16B,24B,L32B,32B,48B	3B,6B,10B,16B,24B	85	16	19%
Specials (M, A EMC, B EMC, HPR)	3M,6M,10M,16M,24M,3AEMC,10A EMC,16A EMC,6B EMC,10B EMC,16B EMC,24B EMC,3 HPR, 6 HPR,10 HPR, 16 HPR, 24 HPR		110	0	0%
HMC (High mating cycles)	6B,10B,16B,24B		42	0	0%
HAN compact (Plastic+Metal+EMC)	Compact		20		0%
HAN Yellock			75	0	0%
HAN Eco	Eco B: 6B,10B,16B,24B Eco A: 10A, 16A Eco modular: 6B,10B,16B,24B		350	106	30
<b>TOTAL Hoods/housings</b>			<b>709</b>	<b>141</b>	<b>20</b>
<b>Insert ranges</b>					
Modules					
Monoblock insert					
<b>TOTAL Modules/inserts</b>					

- Yonggui Can replace ~30% Harting overall portfolio
- Railway replacement can achieve 80% above

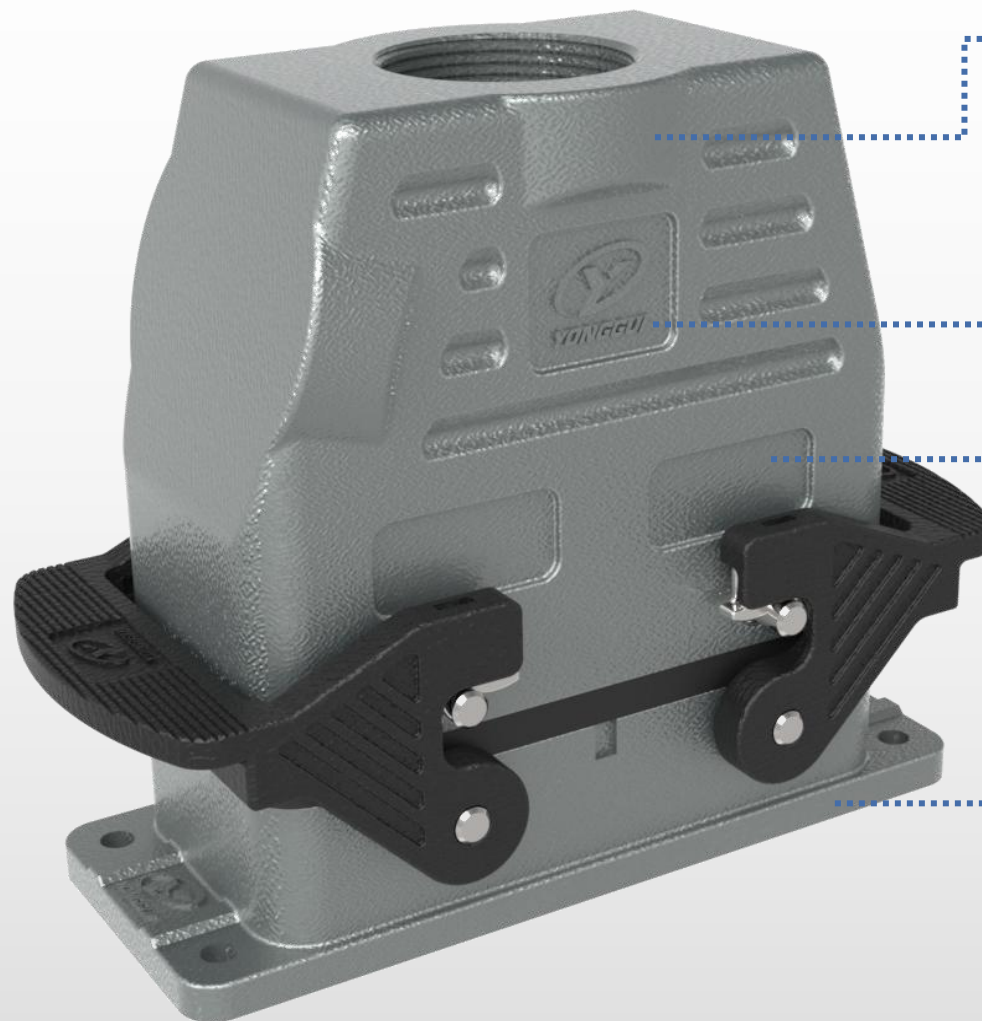
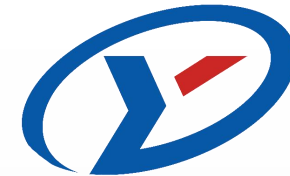


# Housing Display





# Interior Housing



**Widen the housing for  
a better seal**

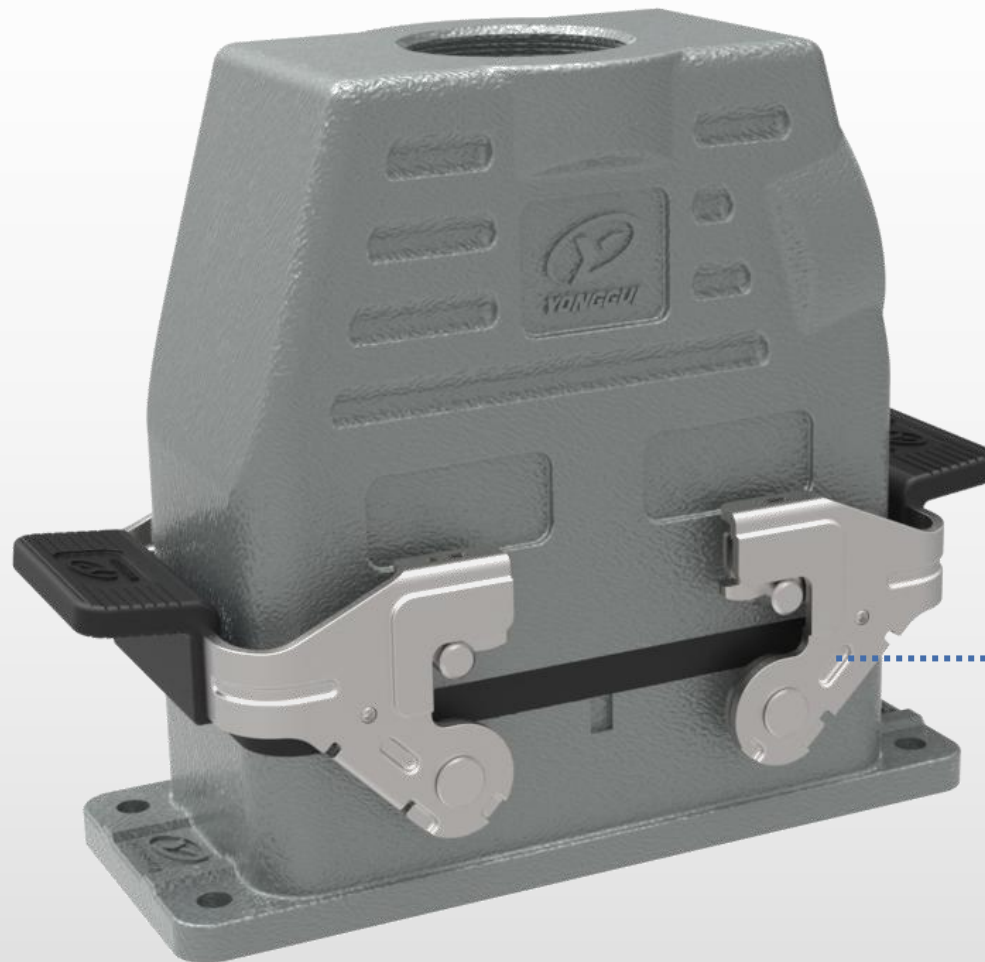
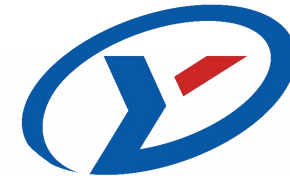
**New Logo and  
appearance, increased  
recognition**

**Add the mark paste  
box to prevent the  
label from falling off**

**The newly upgraded  
waterproof structure of  
the base prevents the  
seal from extrusion and  
the panel tolerance  
reaches  $\pm 0.5\text{mm}$ , making  
it more reliable.**



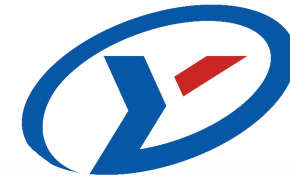
# Interior (Exterior) Housing



**New metal handle, high strength, high anti-corrosion, adapt to high heat, cold, wind and other extreme environment of the car (inside) outside use.**



# Exterior Housing



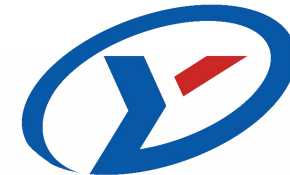
**Widen the housing for  
a better seal**

**New Logo and appearance,  
increased recognition**

**Add the mark paste box to  
prevent the label from falling  
off**



# Housing Performance Comparison

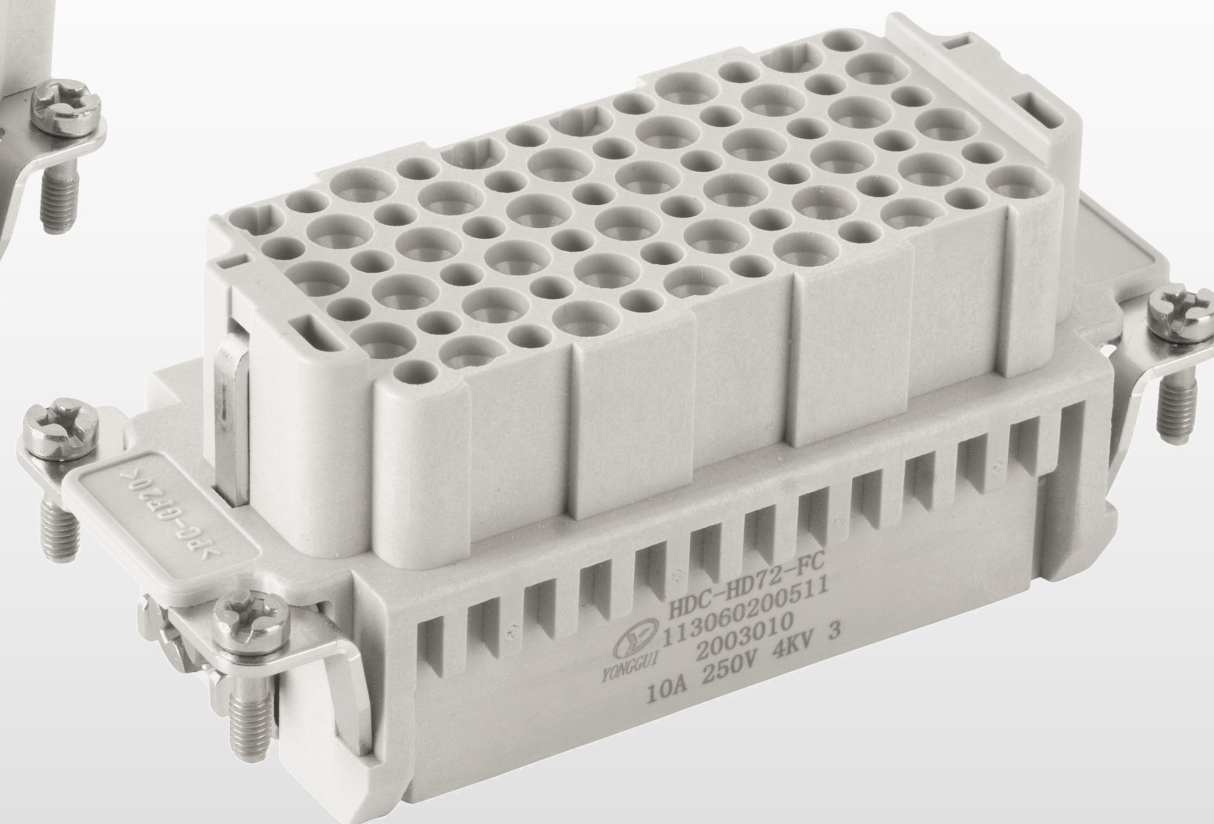
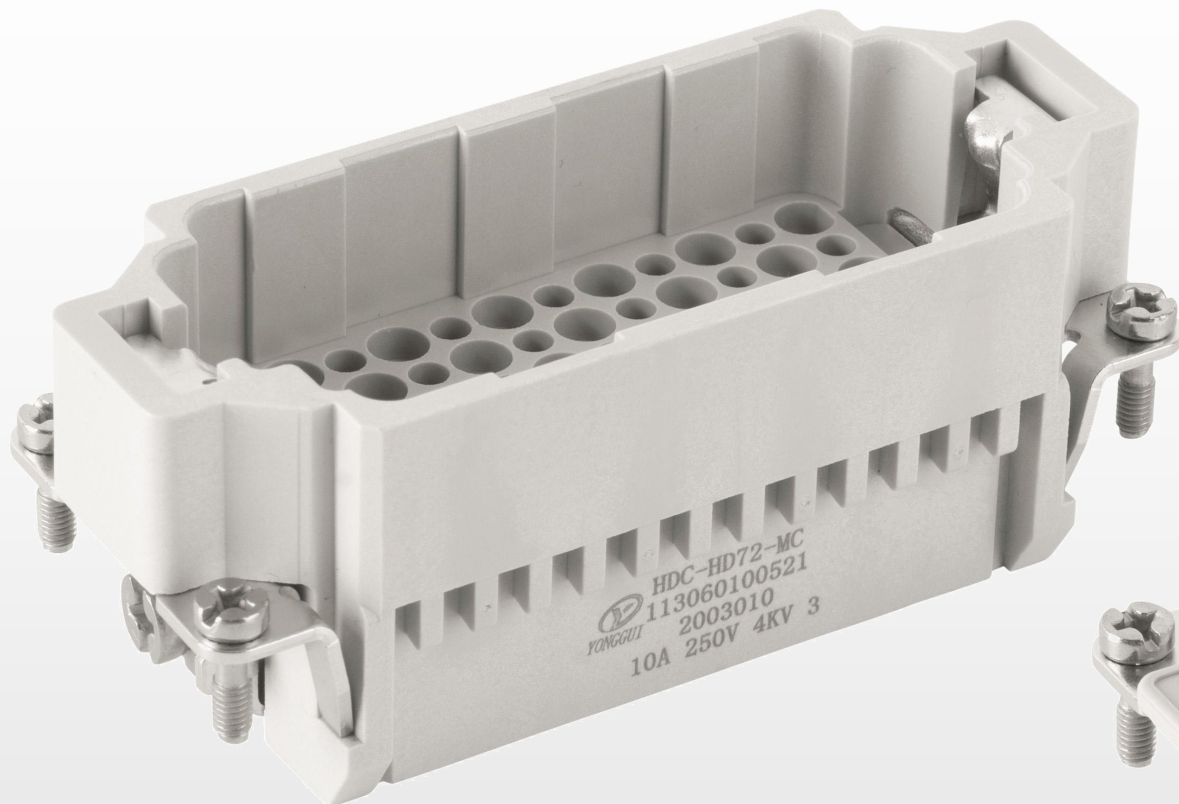
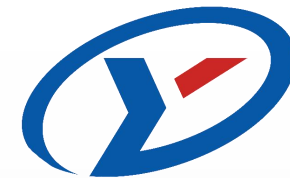


Performance Parameter	Yonggui-B Series Housing	Harting-B Series Housing	W -B Series Housing
IP Rating	IP66	IP66	IP65

Performance Parameter	Yonggui-A Series Housing	Harting-A Series Housing	W -A Series Housing
IP Rating	IP67	IP67	IP67

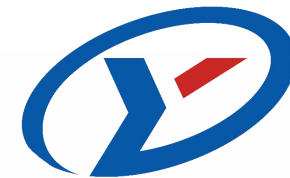


# D-series Insert Display





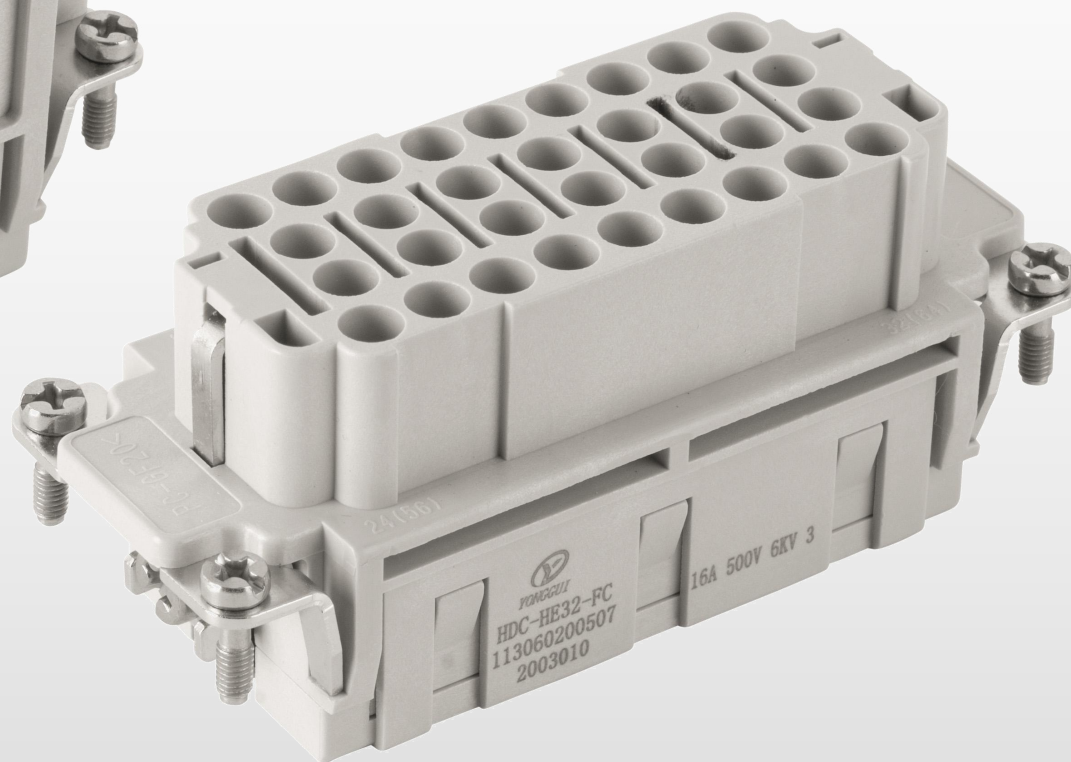
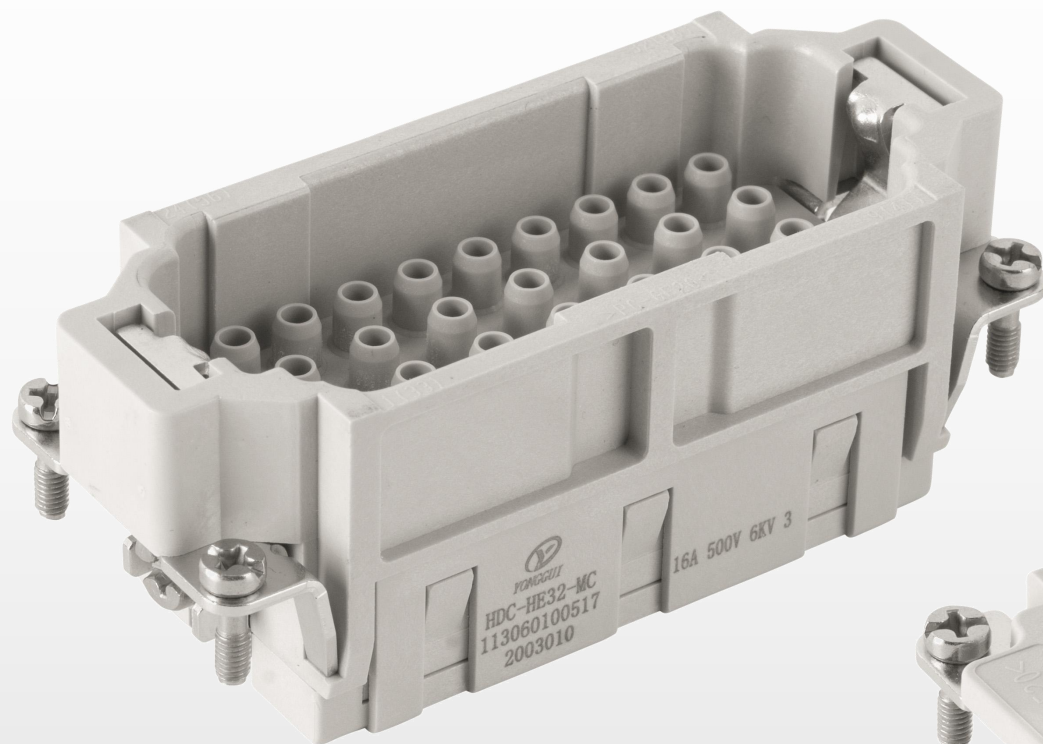
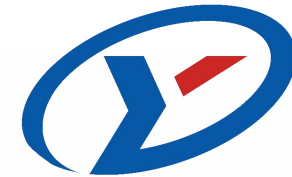
# D-series Performance Comparison



Performance Parameter	Yonggui Products	Harting Product	W Product	Compare Results
Pin Number	24、 40、 42、 64、 72、 108	24、 40、 42、 64、 72、 108	24、 40、 42、 64、 72、 108	/
Rated Voltage	250V	250V	250V	equal
Rated Current	10A	10A	10A	equal
Contact Resistance	$\leq 2.5\text{m}\Omega$	$\leq 3\text{ m}\Omega$	$\leq 3\text{ m}\Omega$	excel
Insulation Resistance	$\geq 10^{10}\Omega$	$\geq 10^{10}\Omega$	$\geq 10^{10}\Omega$	equal
Rated Pulse Voltage	4kV	4kV	4kV	equal
Class Of Pollution	3	3	3	equal
Mechanical Life	$\geq 500$ times	$\geq 500$ times	$\geq 500$ times	equal
Fire Retardant Grade	EN 45545-2 R22&R23	EN 45545-2 R22&R23	V0	equal
Conductor Section Area	0.14-2.5mm <sup>2</sup>	0.14-2.5mm <sup>2</sup>	0.14-2.5mm <sup>2</sup>	equal

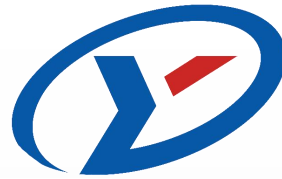


# E-series Insert Display





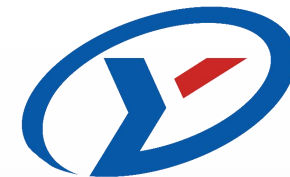
# E-series Performance Comparison



Performance Parameter	Yonggui Products	Harting Product	W Product	Compare Results
Pin Number	6、 10、 16、 18、 24、 32、 40、 46、 64	6、 10、 16、 18、 24、 32、 40、 46、 64	6、 10、 16、 18、 24、 32、 40、 46、 64	/
Rated Voltage	500V	250V	500V	equal
Rated Current	16A	16A	16A	equal
Contact Resistance	$\leq 1\text{m}\Omega$	$\leq 1\text{ m}\Omega$	$\leq 1\text{ m}\Omega$	equal
Insulation Resistance	$\geq 10^{10}\Omega$	$\geq 10^{10}\Omega$	$\geq 10^{10}\Omega$	equal
Rated Pulse Voltage	6kV	6kV	6kV	equal
Class Of Pollution	3	3	3	equal
Mechanical Life	$\geq 500$ times	$\geq 500$ times	$\geq 500$ times	equal
Fire Retardant Grade	EN 45545-2 R22&R23	EN 45545-2 R22&R23	V0	equal
Conductor Section Area	0.14-4.0mm <sup>2</sup>	0.14-4.0mm <sup>2</sup>	0.14-4.0mm <sup>2</sup>	equal

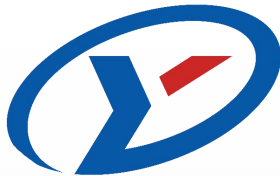


# C-series Insert Display

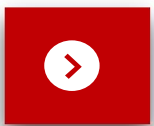




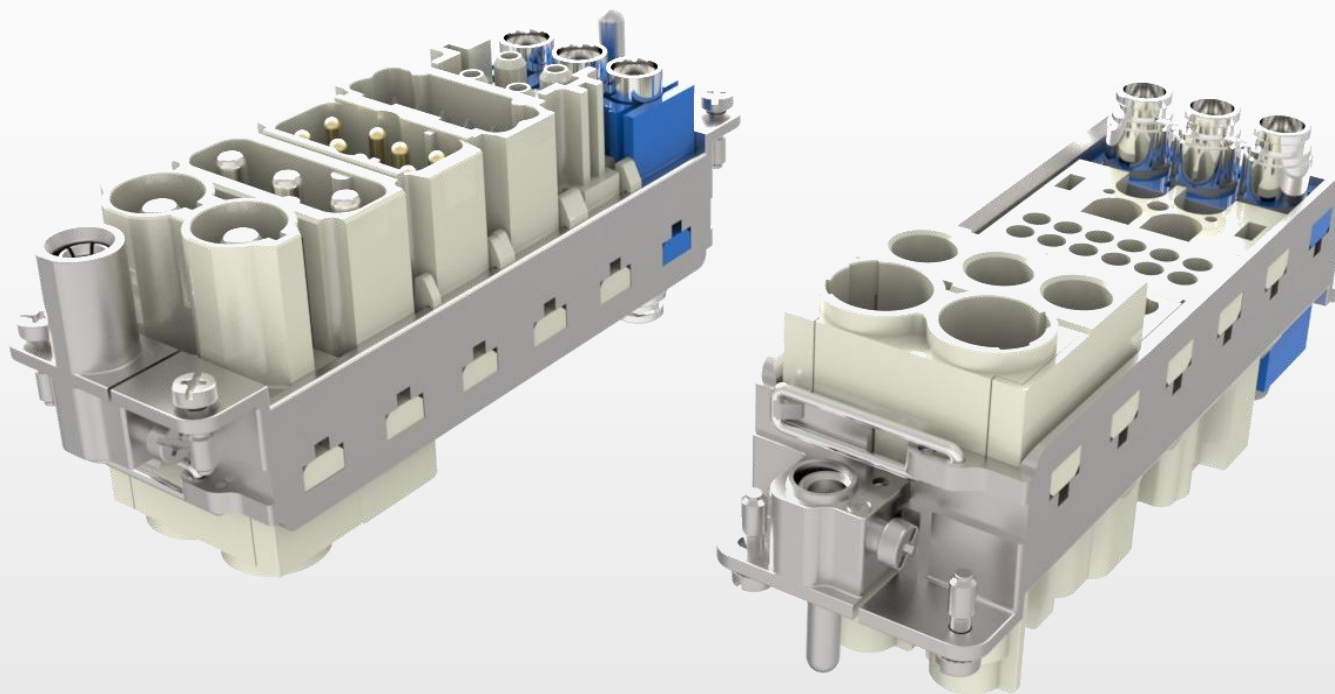
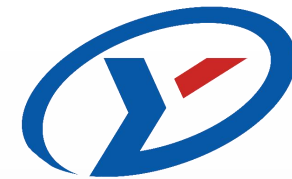
# Performance Comparison of Some C-series Inserts



Performance Parameter	Yonggui Product	Harting Product	W Product	Compare Results	Yonggui Product	Harting Product	W Product	Compare Results
Model	HDC-HC350	Han HC350	HC350	/	HDC-HC350	Han HC 650	HC 650	/
Rated Voltage	2000V	2000V	2000V	equal	4000V	4000V	4000V	equal
Rated Current	350A	350A	350A	equal	650A	650A	650A	equal
Contact Resistance	≤ 0.15mΩ	≤ 0.3 mΩ	≤ 0.3 mΩ	excel	≤ 0.15mΩ	≤0.3mΩ	≤0.3mΩ	excel
Insulation Resistance	≥ 10 <sup>10</sup> Ω	≥ 10 <sup>10</sup> Ω	≥ 10 <sup>10</sup> Ω	equal	≥ 10 <sup>10</sup> Ω	≥ 10 <sup>10</sup> Ω	≥ 10 <sup>10</sup> Ω	equal
Rated Pulse Voltage	12kV	12kV	12kV	equal	18kV	18kV	18kV	equal
Class Of Pollution	3	3	3	equal	3	3	3	equal
Mechanical Life	≥500 times	≥500 times	≥500 times	equal	≥500 times	≥500 times	≥500 times	equal
Fire Retardant Grade	EN 45545-2 R22&R23	EN 45545-2 R22&R23	V0	equal	EN 45545-2 R22&R23	EN 45545-2 R22&R23	V0	equal
Conductor Section Area	4-120mm <sup>2</sup>	25-120mm <sup>2</sup>	35-120mm <sup>2</sup>	excel	25-240mm <sup>2</sup>	70-240mm <sup>2</sup>	95-240mm <sup>2</sup>	excel

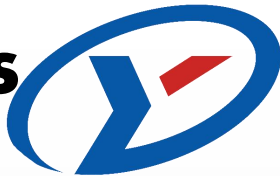


# M-series Insert Display





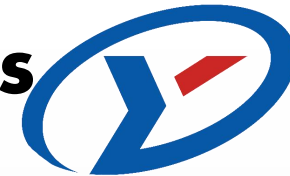
# Performance Comparison of Some M-series Inserts



Performance Parameter	Yonggui Product	Harting Product	W Product	Compare Results	Yonggui Product	Harting Product	W Product	Compare Results
Model	HDC-HM200	Han 200A crimp module	H2MK-001	/	HDC-HM3C40	Han C module	HMK-003	/
Rated Voltage	1000V	1000V	1000V	equal	500V	500V	500V	equal
Rated Current	200A	200A	200A	equal	40A	40A	40A	equal
Contact Resistance	≤ 0.3mΩ	≤ 0.3 mΩ	≤ 0.3 mΩ	equal	≤ 0.5mΩ	≤1mΩ	≤1mΩ	excel
Insulation Resistance	≥ 10 <sup>10</sup> Ω	≥ 10 <sup>10</sup> Ω	≥ 10 <sup>10</sup> Ω	equal	≥ 10 <sup>10</sup> Ω	≥ 10 <sup>10</sup> Ω	≥ 10 <sup>10</sup> Ω	equal
Rated Pulse Voltage	8kV	8kV	8kV	equal	6kV	6kV	6kV	equal
Class Of Pollution	3	3	3	equal	3	3	3	equal
Mechanical Life	≥500 times	≥500 times	≥500 times	equal	≥500 times	≥500 times	≥500 times	equal
Fire Retardant Grade	EN 45545-2 R22&R23	EN 45545-2 R22&R23	V0	equal	EN 45545-2 R22&R23	EN 45545-2 R22&R23	V0	equal
Conductor Section Area	16-70mm <sup>2</sup>	25-70mm <sup>2</sup>	25-70mm <sup>2</sup>	excel	1.5-10mm <sup>2</sup>	1.5-10mm <sup>2</sup>	1.5-10mm <sup>2</sup>	equal



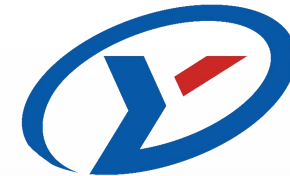
# Performance Comparison of Some M-series Inserts



Performance Parameter	Yonggui Products	Harting Product	W Product	Compare Results
Model	HDC-HMGB8	Han Gigabit contact carrier	H2MK-001	/
Rated Voltage	50V	50V	50V	equal
Rated Current	5A	5A	5A	equal
Contact Resistance	$\leq 3\text{m}\Omega$	$\leq 10\text{m}\Omega$	$\leq 4\text{ m}\Omega$	excel
Insulation Resistance	$\geq 10^{10}\Omega$	$\geq 10^{10}\Omega$	$\geq 10^{10}\Omega$	equal
Rated Pulse Voltage	0.8kV	0.8kV	0.8kV	equal
Class Of Pollution	3	3	3	equal
Mechanical Life	$\geq 500$ times	$\geq 500$ times	$\geq 500$ times	equal
Fire Retardant Grade	EN 45545-2 R22&R23	EN 45545-2 R22&R23	V0	equal
Transmission Speed	10000Mbit/s	10000Mbit/s	unknown	equal
Conductor Section Area	0.35-0.75mm <sup>2</sup>	0.09-0.52mm <sup>2</sup>	0.09-0.52mm <sup>2</sup>	make a difference

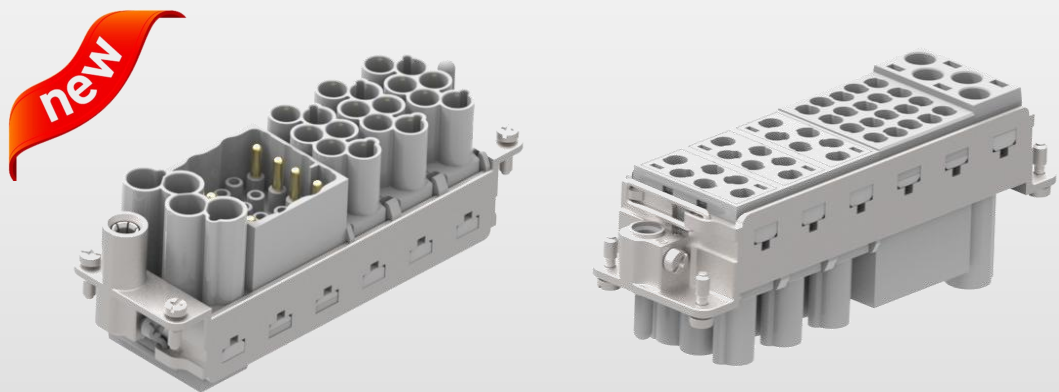


# Innovation



◆ optimization deployed on frame design to simply the assembly, remove the special tool and issue of reliability of screw.

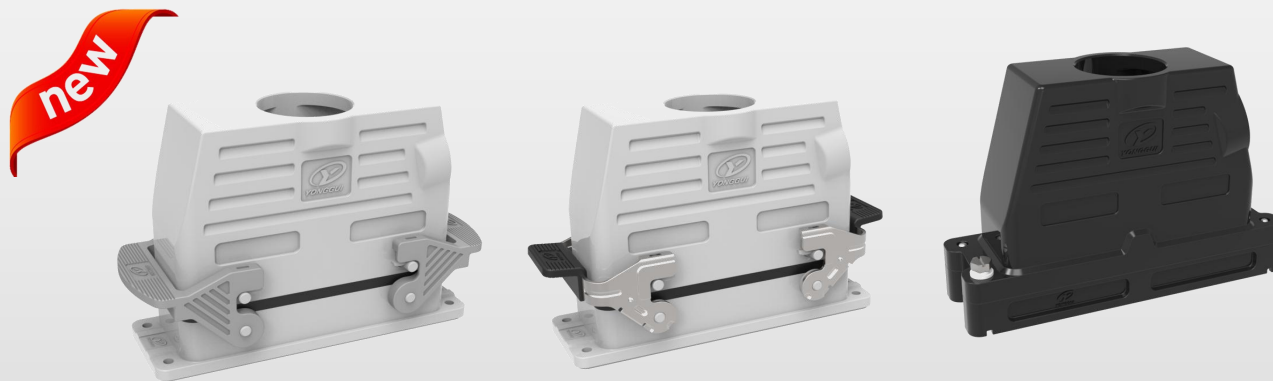
◆ **This optimization certified with Invention Patent**



◆ The new design of the second generation housing is highly recognizable, and **certified with Appearance and Invention Patent**

◆ Salt Spray resistance improved from 96h to 500h

◆ New design of metal, expand the application range



4

# Global Projects

---



# Application Performance



YG HDC connector products have been supplied since 2004 and have been installed on more than 350 projects both domestically and internationally, including 43 foreign projects in New York, Mexico, Germany, South Korea, Malaysia, Singapore, Saudi Arabia, etc. with supply performance attached.



***YONGGUI***

CONNECTION TO FUTURE